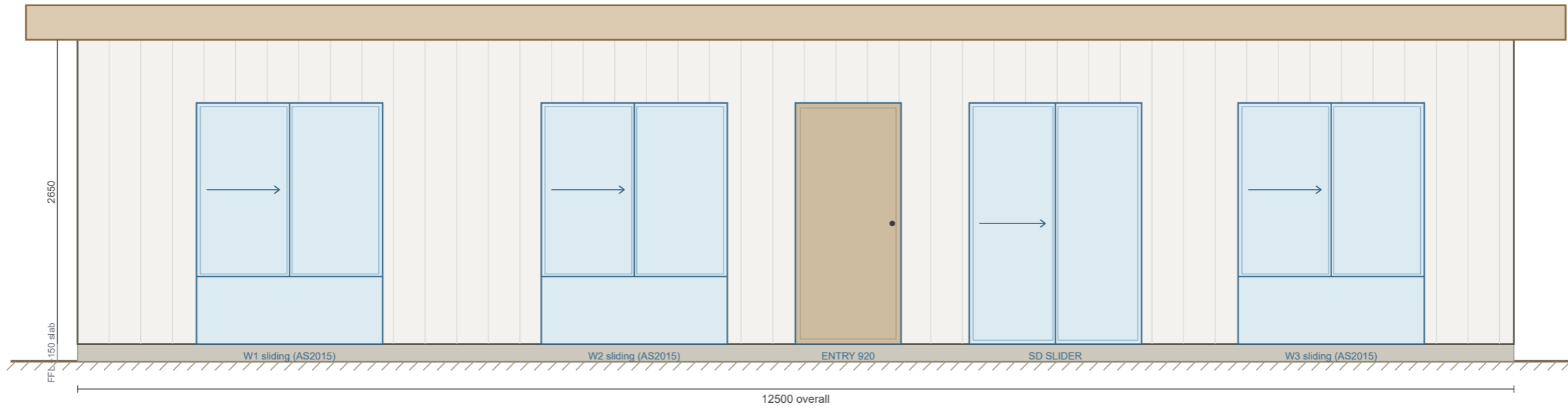


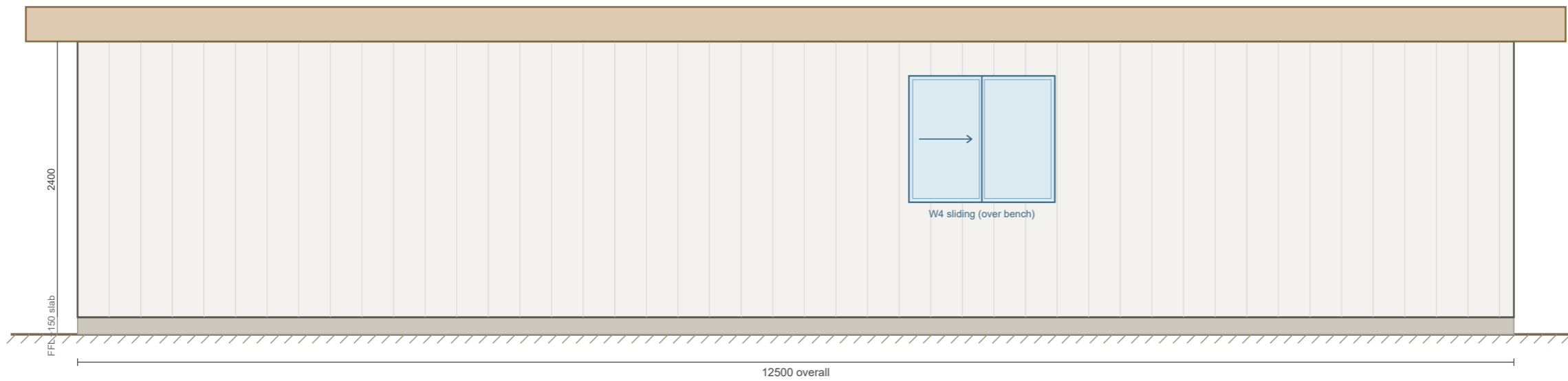
**FRONT (NORTH) ELEVATION — high side · faces north**

HIGH 2650 · front eave 600 (solar-shading)



**REAR (SOUTH) ELEVATION — low side**

LOW 2400 · rear eave 450



<b>GRANNY FLAT TEAM</b>	
Total Scope Carpentry · ABN 63 252 232 704 · Ph 0403 370 551 · Bonython ACT	
<b>Project: 1 Bedroom Type A Granny Flat · 12.5 × 4.8 = 60 m<sup>2</sup> · Canberra (Zone 7)</b>	
Drawing: ELEVATIONS — FRONT & REAR	
SCALE As shown @ A3	DRAWN 2026-06-20
DRAWING No <b>GF-A05a</b>	REV / SHEET P1 · Sheet 1 of 2 — A3 — PRELIMINARY

ELEVATIONS — FRONT (north, high 2650, glazed) & REAR (south, low 2400). Skillion 3°. Windows & doors at floor level (head 2100); W4 high-level over the kitchen bench. SD = living slider to front deck. Openings at Monaro stud openings (W1–W3 1620, W4 1270, SD 1500). Front faces NORTH — winter sun admitted, summer sun shaded by the 600 eave. Concrete slab-on-ground — FFL = 150 above NGL, step-free entry & SD thresholds. Cladding: Hardie Oblique 300 mm vertical (275 cover). Preliminary — for engineer/certifier sign-off. Side (and) elevations on Sheet GE-A05b.